

Operating software update for BZ 500 LSN / BE 500

- Download required software from mailbox of Bosch Security Systems Infomanagement:
 - «Bootprom–SW für ZALE/ERLE/BEB Stand: xx (CS XXXX)», from version 2.20 up
 - «ASUP–Programm für BZ 500 Update, Version 2.xx», from version 2.1 up
 - «ZALE10 Anlagen–SW für BZ 500 A.xx (HEX–MIN F., CS XXXX)», from v. 3.30 up

☞ Follow this programming order:

1. ERLE 10
2. ZALE 10
3. BE 500 (by OVS).

- Burn Bootprom–software onto the Boot–EPROM (checksum see titling of SW–version) and label EPROM (see picture).

☞ Each ERLE, ERSE and/or BE 500 being installed requires one more Boot–EPROM.

- Take off cover of BZ 500, remove jumper ANLAGE EIN (on ANNE 10) and exchange EPROM(s):

- on ZALE 10
- on ERLE 10 (if installed)
- on ERSE 10 (if installed)

- If a BE 500 is installed remove cover and exchange EPROM on the BEB10 circuit board as well.

- Install «ASUP–Programm für BZ 500 Update, Version 2.xx» on PC / laptop (extract ZIP–file).

- Copy system software («ZALE10 Anlagen–SW...») to C:\ Programm\ ASUP 2.xxx\Hex\ BZ500\W0000.

☞ Preset interface for data transfer is COM1 (see OPTIONEN / COM –SCHNITTSTELLE of ASUP2.x).

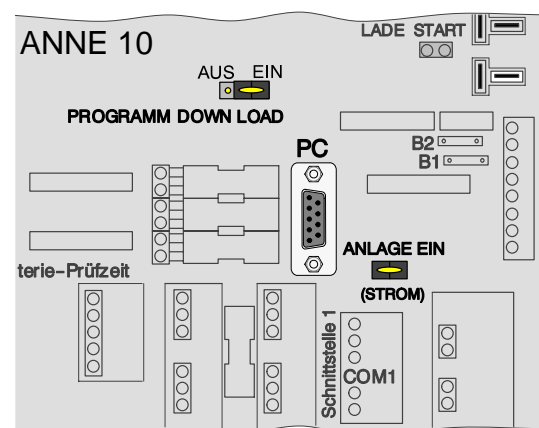
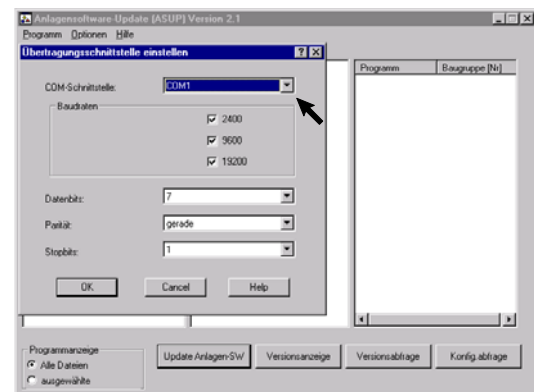
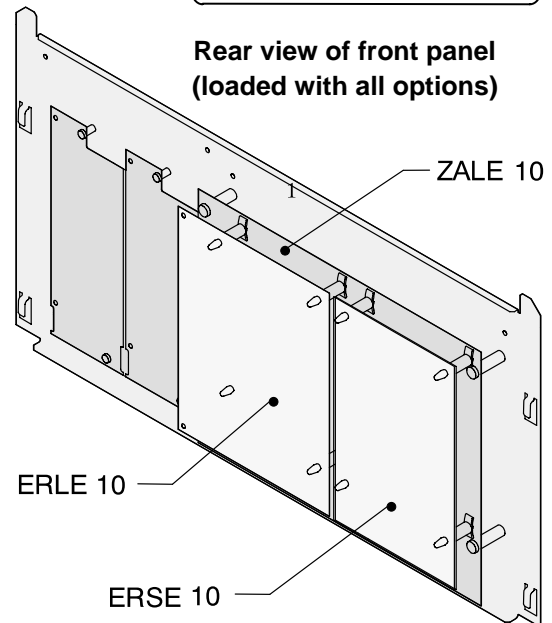
If your PC / laptop uses a different interface for data transfer change setting (e.g. COM2).

- Connect BZ 500 and PC / laptop with a V24–(RS–232)–interface cable.
 - **PC** on ANNE 10 (at BZ 500)
 with
 - **COM 1** (or COM2) at PC / laptop.

- Set jumper PROGRAMM DOWN LOAD (on ANNE 10) to «EIN» (only required for first software update).

- Power up BZ 500 by setting the jumper on ANLAGE EIN (on ANNE10) .

3.802.191.612
 BZ 500 / BE 500 UPDATE
 V2.2 CS: XXXX ZALE / IC 73
 ERLE / IC 57



- Execute file ASUP.EXE on PC / laptop.

⇒ The software update program ASUP starts scanning the configuration (onscreen message [Konfigurationsabfrage. . .]). Thereafter the configuration of BZ 500 is displayed (see picture).

- Click on file [bzxxxx.hex] within left window **(1.)** and on destination file within right window **(2.)**:
 –[ERLE] for update of ERLE10
 –[BZ500] for update of ZALE10

- After that click on [Update Anlagen-SW] **(3.)**.

⇒ The settings of software transfer data are displayed asking:
 Are you sure you want to start system software update?

- Click [OK] for confirmation **(4.)**.

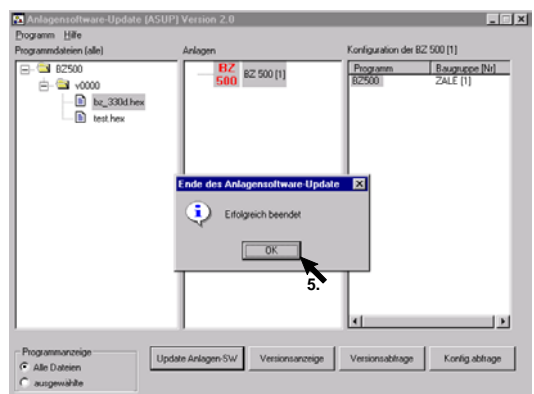
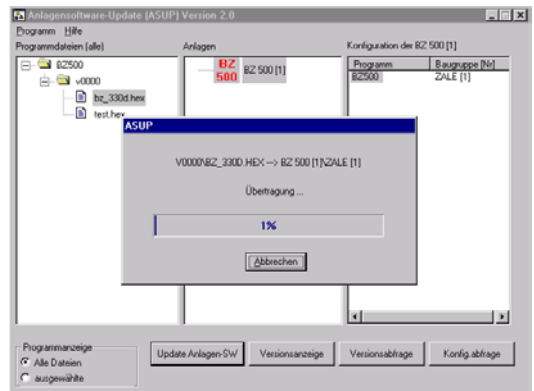
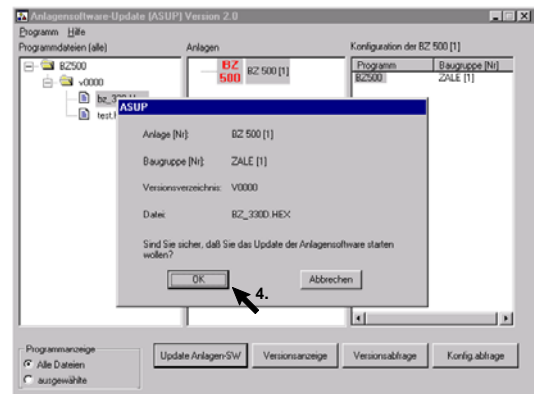
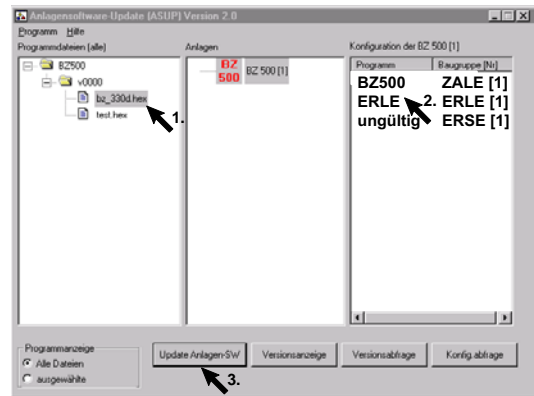
⇒ During transfer time the message [Software Download: Start Boot–EPROM] is shown on the BZ 500 display. All LEDs are flashing.

⇒ Transfer progress in % is displayed on PC / laptop. The data transfer lasts 8 minutes approx..

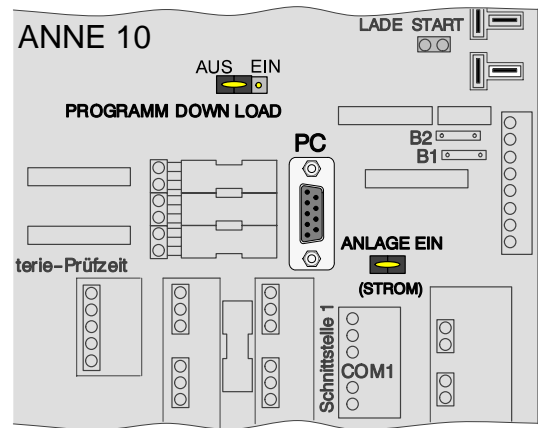
⇒ A successful data transfer will be notified by the message [Erfolgreich beendet].

- Click [OK] for confirmation.

- A software update of ZALE 10 (if installed) is carried out by according procedure. Just choose [BZ500] for configuration (see picture on top, step 2.).



- After successful data transfer reset jumper PROGRAMM DOWN LOAD (on ANNE 10) to AUS.
 - Remove and replace jumper ANLAGE EIN to restart the BZ 500 (only required for first software update).
- ⇒ When restarting the BZ 500 date and time input must be done. Thereafter the current operating software version is displayed.



- ☞ A software update of a BE 500 is carried out accordingly. For data transfer to BE 500 an OVS is required.

Troubleshooting for Software Update

- If the central unit does not return to normal operating condition due to failing data transfer or update break off, set jumper PROGRAMM DOWN LOAD (on ANNE 10) to EIN and restart update procedure.
- Reset jumper PROGRAMM DOWN LOAD (on ANNE 10) to AUS after successful data transfer.