

Flash Programming

Description:

The “Mx-4000” and “Lx-9400” series of fire and lighting products are equipped with a facility that enables the on-board micro-controller to be programmed in the field by a suitably qualified engineer.

The equipment required to program an “Mx / Lx” product is as follows: -

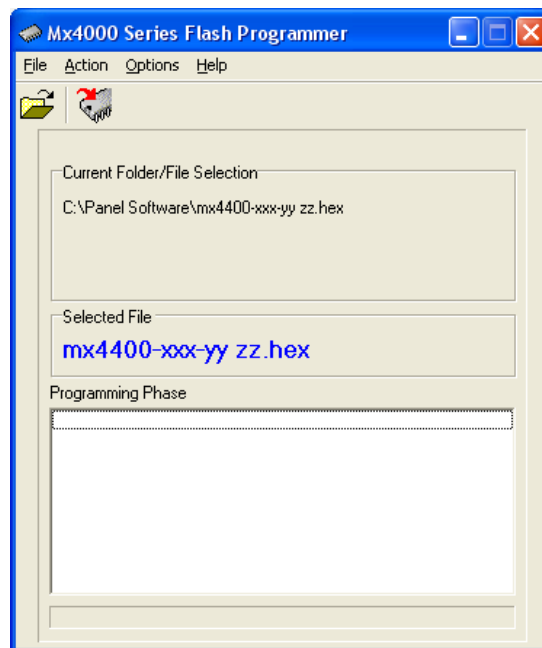
1. IBM compatible PC.
2. “Advanced” RS232 Serial Lead. (3 to 9 pin)
3. “MxFlasher.exe” PC programming utility.
4. Target “hex” file

Programming:

Connection and Running “MxFlasher”:

Connect the RS232 lead between the PC and the RS232 socket of the unit to be programmed.

If the “MxFlasher.exe” file is not already on the PC, copy the file on to your PC.



Now Run “MxFlasher.exe” by double clicking on its icon.

File Selection:

Using “File→Open” from the menu bar or the “File Open” tool button, select the “target file” that is to be programmed into the unit. This file will have a “.hex” extension. (e.g. “Mx4400-001-01.hex”)

Com Port and Baud Rate:

The default COM port used is com1. If you wish to use a different COM port, select “Options→ComPort” from the menu bar and select the COM port to be used.

The default baud rate for the communications port is 38400. It is NOT recommended that a higher speed be used for programming the Mx / Lx range of products.

Micro-controller Programming:

Now press the “Program” tool button (IC icon) or alternatively select “Action→Program”. The following screen will appear.

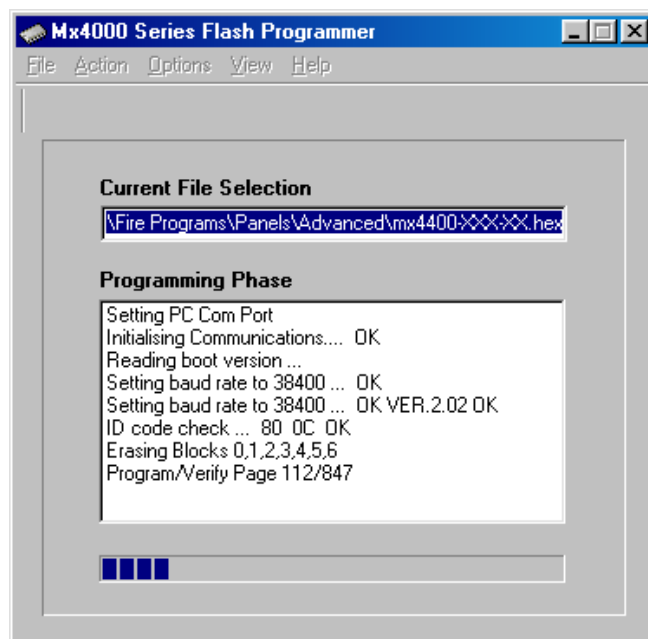
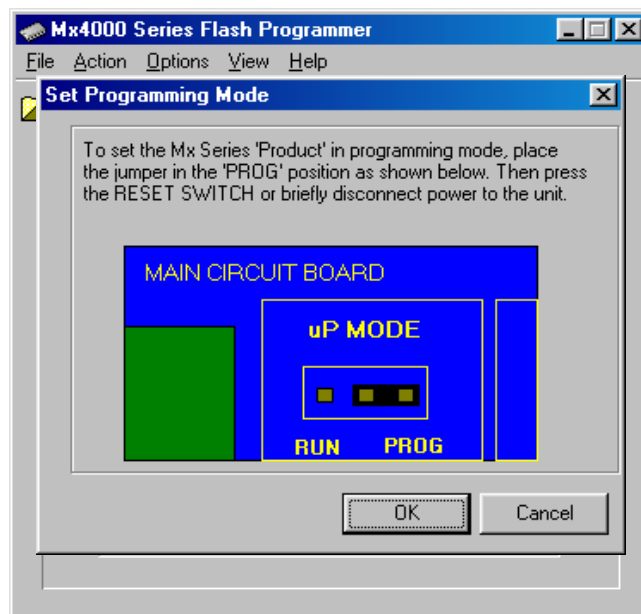
To place the unit into the condition so that it will accept the new program, a specific sequence must be followed:

- Place the jumper marked “uP MODE” to the “PROG” position
- Briefly disconnect the power supply from the unit OR alternatively press the on board “RESET” button if accessible.

NOTE: The “RESET” button is marked “RESET SWITCH” on the printed circuit board and does not relate to the “RESET” key on the front of the fire panel / repeater etc.

- Press “OK” on the “Set Programming Mode” dialog box.

The “MxFlasher” utility will now show the progress of the programming phase as shown below.

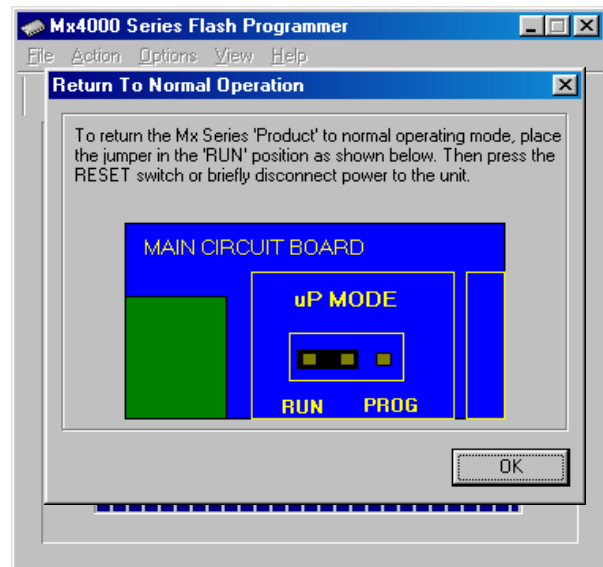


Once the programming phase is complete, a dialog box will appear indicating programming completion. Click OK.

Returning to Normal Operation:

To return the card to its normal operating mode, a specific sequence must be followed:

- Return the jumper marked “uP MODE” to the “RUN” position
- Briefly disconnect the power supply from the unit OR alternatively press the on board “RESET” button if accessible.
NOTE: The “RESET” button is marked “RESET SWITCH” on the printed circuit board and does not relate to the “RESET” key on the front of the fire panel / repeater etc.
- Press “OK” on the “Return To Normal Operation” dialog box to close the “MxFlasher” utility.



The programming sequence is now complete.