

PC-NeT-007 Mx Logo Tool

Using the Mx Logo Tool

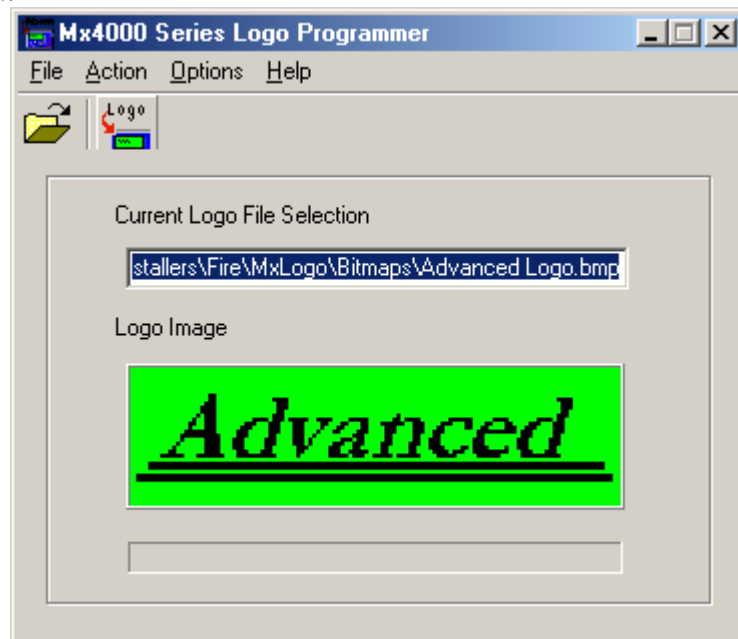
The 'Mx Logo Tool' allows the user to upload custom Bitmap logos, for display on the Panel's LCD. These images need to be created using a 3rd party drawing package i.e *Paint* which is supplied with *Windows 9x, NT, 2000*.

The bitmap image files must be in the format of 120 pixels wide x 31 pixels high, monochrome.

To install the software on to the PC run the 'Setup.exe' file on the floppy disk and follow on screen instructions.

Launch the 'Mx Logo Tool' from the start menu.

Open the required file by either clicking the 'Open folder' icon or by selecting 'File | Open' from the file menu.



Document Reference	680-023-01	Rev	01	DCS	Date	RFM-Pc-NeT-007-05 Nov 2001	Page	1 of 2
--------------------	------------	-----	----	-----	------	----------------------------	------	--------

The Options menu allows selection of required COM port number (COM 1 as default). It also allows selection of the required level 3 password required to obtain access to the panel.

Click on the 'Send Logo Bitmap to Panel' button, or select 'Action | Send Logo to Panel' from the file menu, to upload the new logo to the panel.

Document Reference	680-023-01	Rev	01	DCS	Date	RFM-Pc-NeT-007-05 Nov 2001	Page	2 of 2
--------------------	------------	-----	----	-----	------	----------------------------	------	---------------